

TERRELL COUNTY

COUNTY LINE

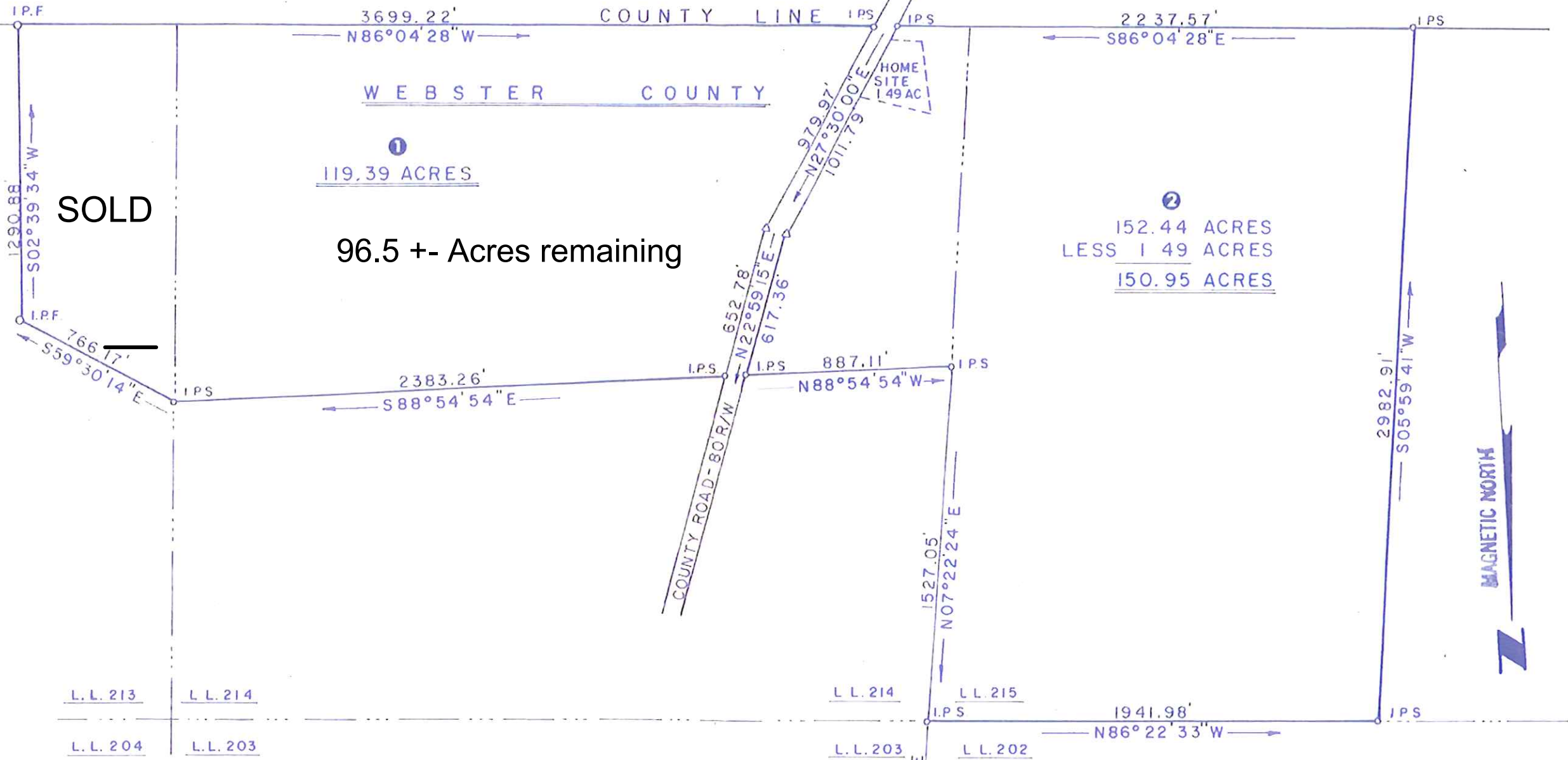
WEBSTER COUNTY

1
119.39 ACRES

96.5 +/- Acres remaining

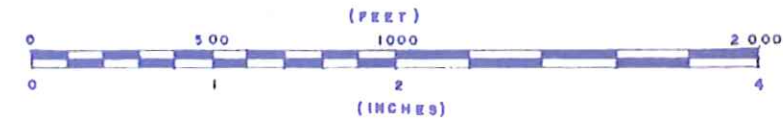
2
152.44 ACRES
LESS 1.49 ACRES
150.95 ACRES

SOLD



L.L. 213 L.L. 214
L.L. 204 L.L. 203

L.L. 214 L.L. 215
L.L. 203 L.L. 202



In my opinion, this plat is a correct representation of the land platted and has been prepared in conformity with the minimum standards and requirements of Law. Georgia Registered Surveyor No. 1526
Kenneth Earl Dunmon

"THE FIELD DATA UPON WHICH THIS MAP OR PLAT IS BASED HAS A CLOSURE PRECISION OF ONE FOOT IN 36,800 FEET AND AN ANGULAR ERROR OF 20" PER ANGLE POINT, AND WAS ADJUSTED USING COMPASS RULE."

SURVEY FOR TROY E. MORRIS		
SCALE: 1" = 500'	APPROVED BY	DRAWN BY
DATE: JAN. 28, 1988		K. E. D.
271.83 ACRES, LAND LOTS 213, 214, 215 - 18th LAND DISTRICT WEBSTER COUNTY, GEORGIA		
		DRAWING NUMBER